

TDL57 IP44

PRODUCT CODE # 057FIE930A1B03



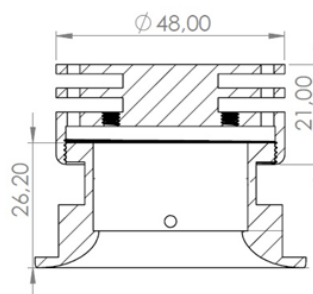
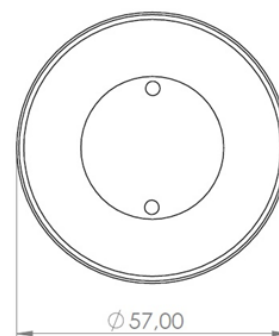
RECESSED LED DOWNLIGHT

LIGHT SPECIFICATION

LED module	Philips Fortimo SLM C 930 1203 L09 1619 G7 HE
Color temp	3000K
CRI	>90
Light beam angle	38°
Reflector	C11862_MINNIE-W
Lumen output	500lm
Luminaire power	4W
Lumen maintenance	Tc nom 55°C L80B10 – 60 000h Tc life 90°C L70B20 – 60 000h
Working temp. range	-20°C ... +45°C
Serial connected	No
Voltage per light	33VDC
Connectors	Ensto NCC21SL.G

ADDITIONAL SPECIFICATION

Power supply	220-240V 50/60Hz External driver
Driver	Philips Xitanium 4W TE
Dimming	On-Off
Connector	Ensto NAC31S.W
Adjustability	Fixed
Trim color	RAL9016
Body material	Steel machined
Fire class	B-0
IP class	IP44 / Driver IP20
Dimensions (Øxh)	Ø57mm x 48mm
Fixing	Springs
Cutout	Ø51mm



SECTION A-A

